

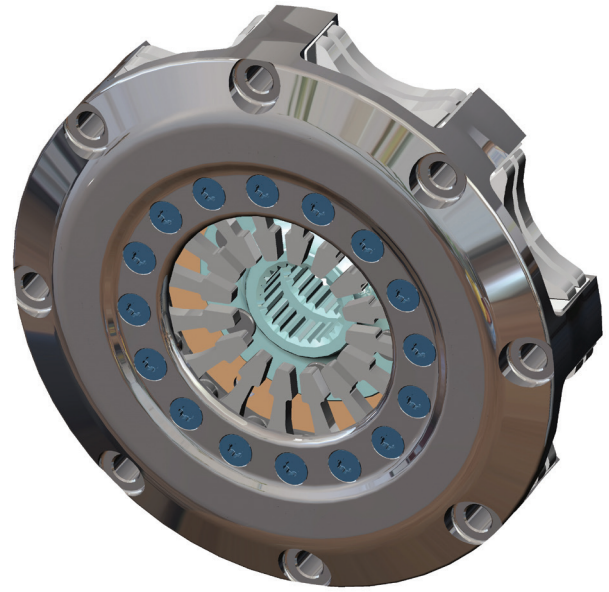
motorsport sintered range **KKS1402**

ø140 (5.5") Twin plate race clutch

Specifications

Part Number	KKS1402HORSR01	KKS1402HDGSR01
Dynamic Torque Capacity Nm (lb/ft)	481 (355)	559 (411)
Release ratio	High	High
Assembly Weight inc. Driven Plate (Kg)	2.37	2.37
Assembly Inertia inc. Driven Plate (Kgm ²)	0.0081	0.0081
Release Load New ø38 Bearing (kN)	2.3	2.9
Release Load New ø44 Bearing (kN)	2.6	3.2
Release Load New ø52 Bearing (kN)	2.9	3.5

Step flywheel part numbers shown. For Pot flywheel replace "SR" with "PR". Other hub configurations are available.



Applications

Circuit Racing.

Replacement parts

Part Number	KKS1402HORSR01	KKS1402HDGSR01
Pressure Plate (High Ratio)	KPS140L08H537	KPS140L08H537
Pressure Plate Thickness (mm)	13.7	13.7
Pressure Plate Fulcrum Dia (mm)	ø117	ø117
Floater plate	KPS140L08FX01	KPS140L08FX01

Key features and benefits

- Compact design for low weight and inertia.
- High stiffness cover design for improved start line control.
- Open lug type design for improved cooling and dust removal.
- Durable plated finish.
- Stainless steel wear plates fitted to cover legs.
- Interchangeable with other manufacturers' products.
- Step and Pot flywheel mounting options available.

Installation dimensions

