

# Toyota LC200 Front & Rear Brake Upgrade

**alcon**  
specialist brakes & clutches

## Key features and benefits

- Gains in performance over stock standard duty braking system:
  - Up to 45% reduction in disc temperature rise
  - Up to 42% reduction in front and rear pad work rates
  - Up to 10% increase in available brake torque
  - Up to 10% reduction in pedal effort
- Ductile iron caliper housing providing maximum strength and stiffness as well as high resistance to impact and fatigue
- Acid zinc finish for maximum corrosion protection
- High friction pads increase stopping power
- Large rotors increase brake torque and thermal capacity, allowing the vehicle to safely operate at armoured weights and reducing potential for brake fade
- Increased pad area reduces temperatures and increases pad life at armoured vehicle weights

## Specifications

- High temperature seal material
- Wiper seal on every piston for dirt exclusion
- Compatible with stock OEM actuation
- Fits many 17" & 18" OE and armoured specification wheels
- Discrete styling
- Bleed screws on in-board side only for maximum tamper-proof safety
- Pad push-back springs for optimum wear resistance off-road

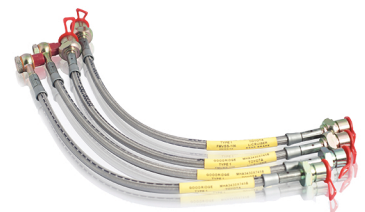
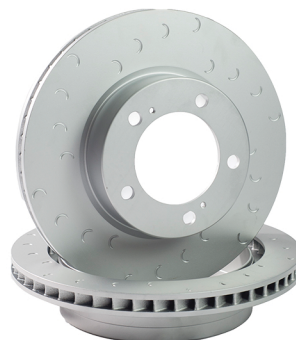
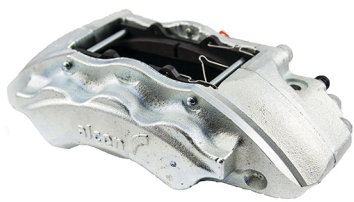
	Front	Rear
Brake kit part no.	BKC1559K18	
Caliper	6 piston	4 piston
Size (pistons)	6 x 41.3	4 x 34.9
Disc	355x36mm	370x28mm
Pad material	Heavy duty	Heavy duty

**Usage:** On and off-road  
Armoured up to 6,600 kg

(Vehicle rating is based upon generic vehicle data. Specific vehicle axle weights, tyre rolling radii, centres of gravity, maximum speed, etc. may vary by customer application. Alcon cannot be liable for issues relating to variances of vehicle specification)

**Fits:** 2016 onwards - Toyota LC200 & Lexus LX570

**Included in the kit:** Front & rear calipers, front & rear discs, bracket kits, pad sets, hose kit



+ 44 (0) 1827 723700 | [info@alcon.co.uk](mailto:info@alcon.co.uk)